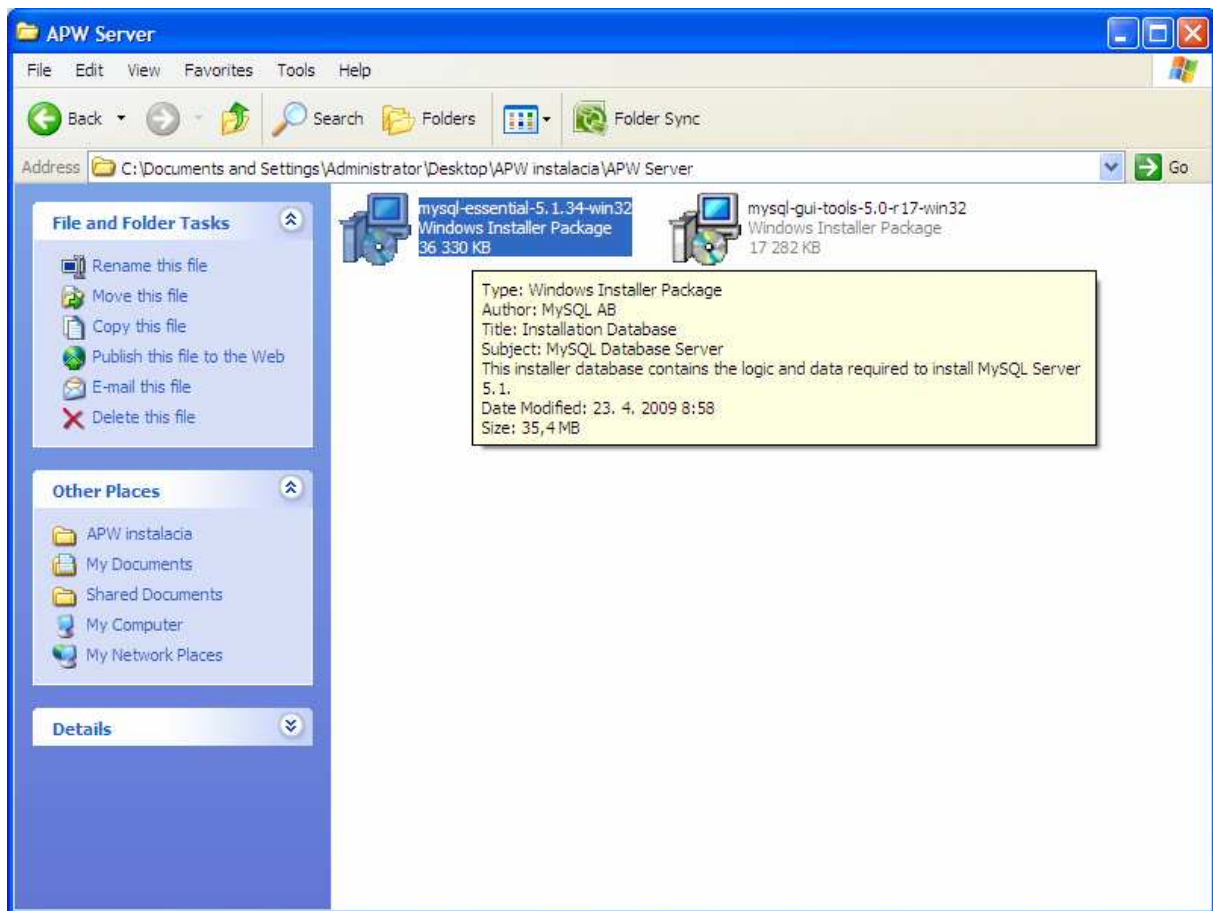


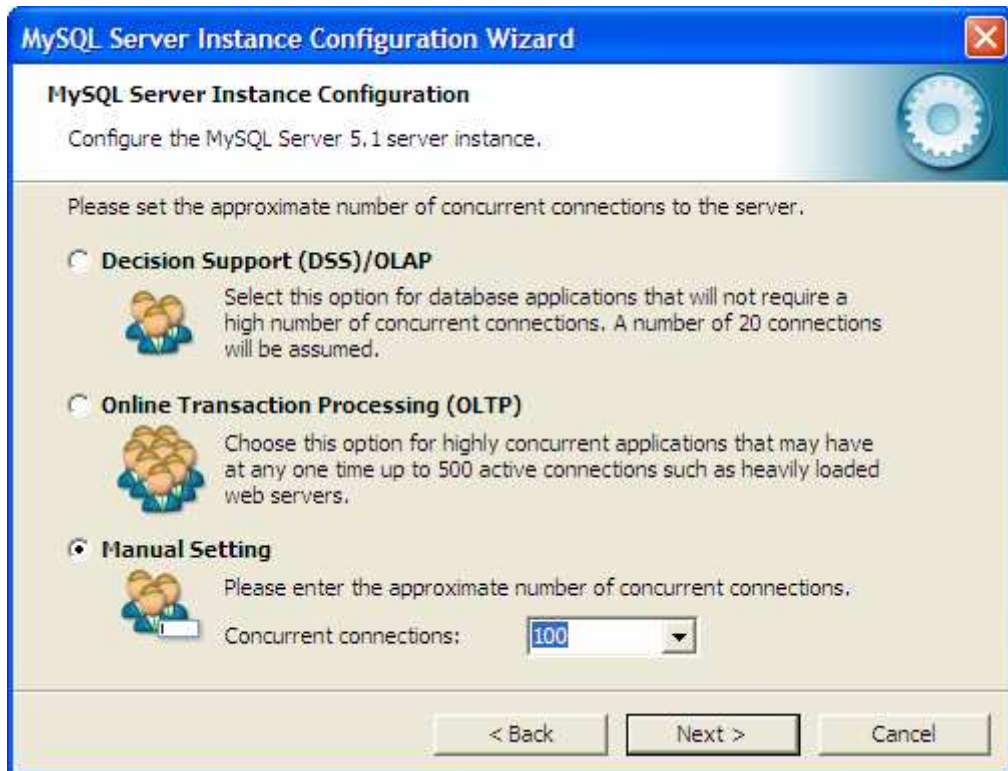
## INSTALACIA MySQL SERVER



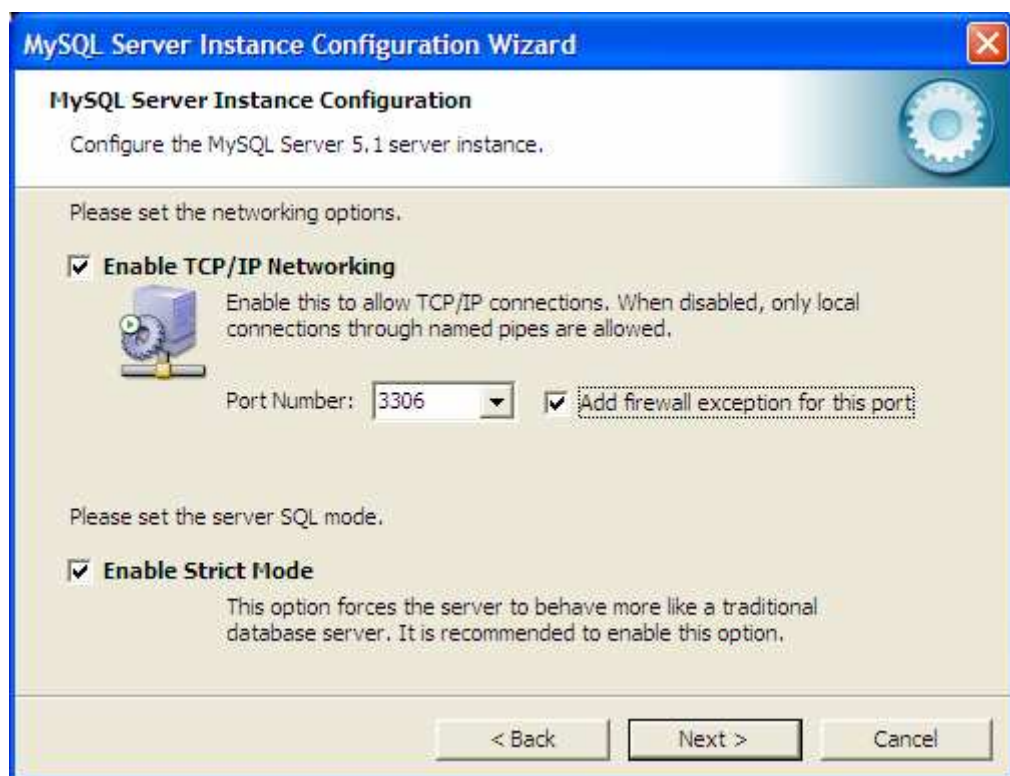
Zmente cestu ku databaze na nejaký adresar kde bude mat sluzba opravnienie zapisovat. Napr:  
C:\Program Files\MySQL\MySQL Server 5.1\Data



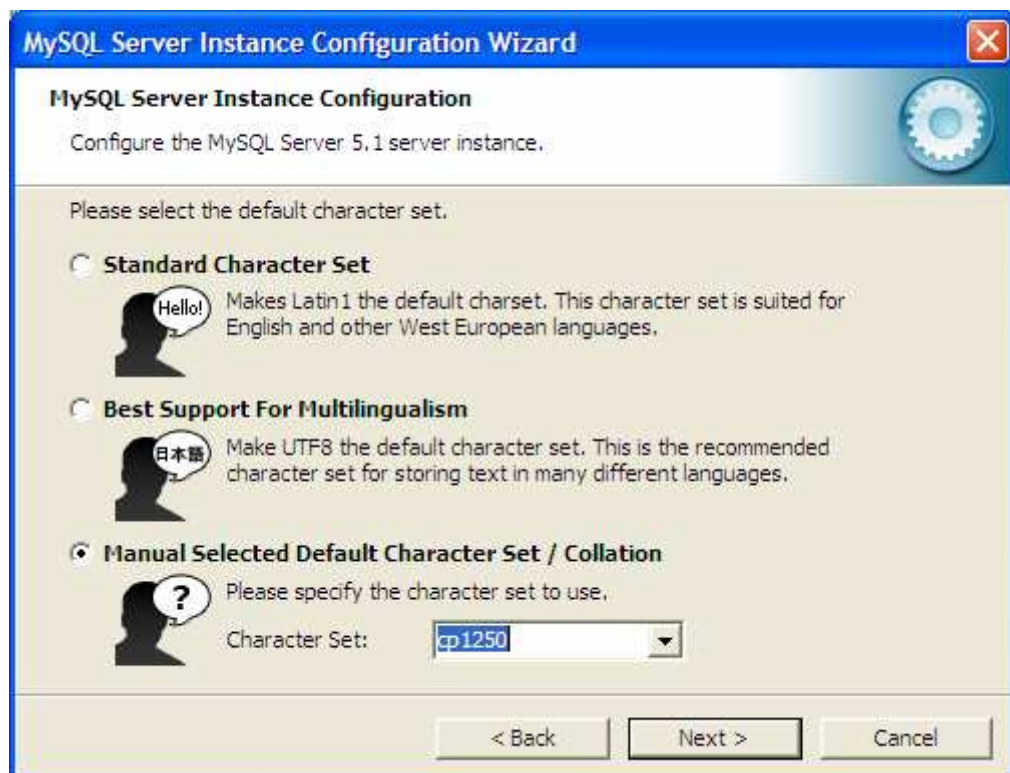
Potom Next defaultne az po toto nastavenie:



Tuto by malo stacit nastavenie 100, v pripade velkej firmy mozete toto cislo zvacsit, nic tym nepokazite.



Pridame vnyimku na firewall



Treba nastavit kodovu stranku na cp1250

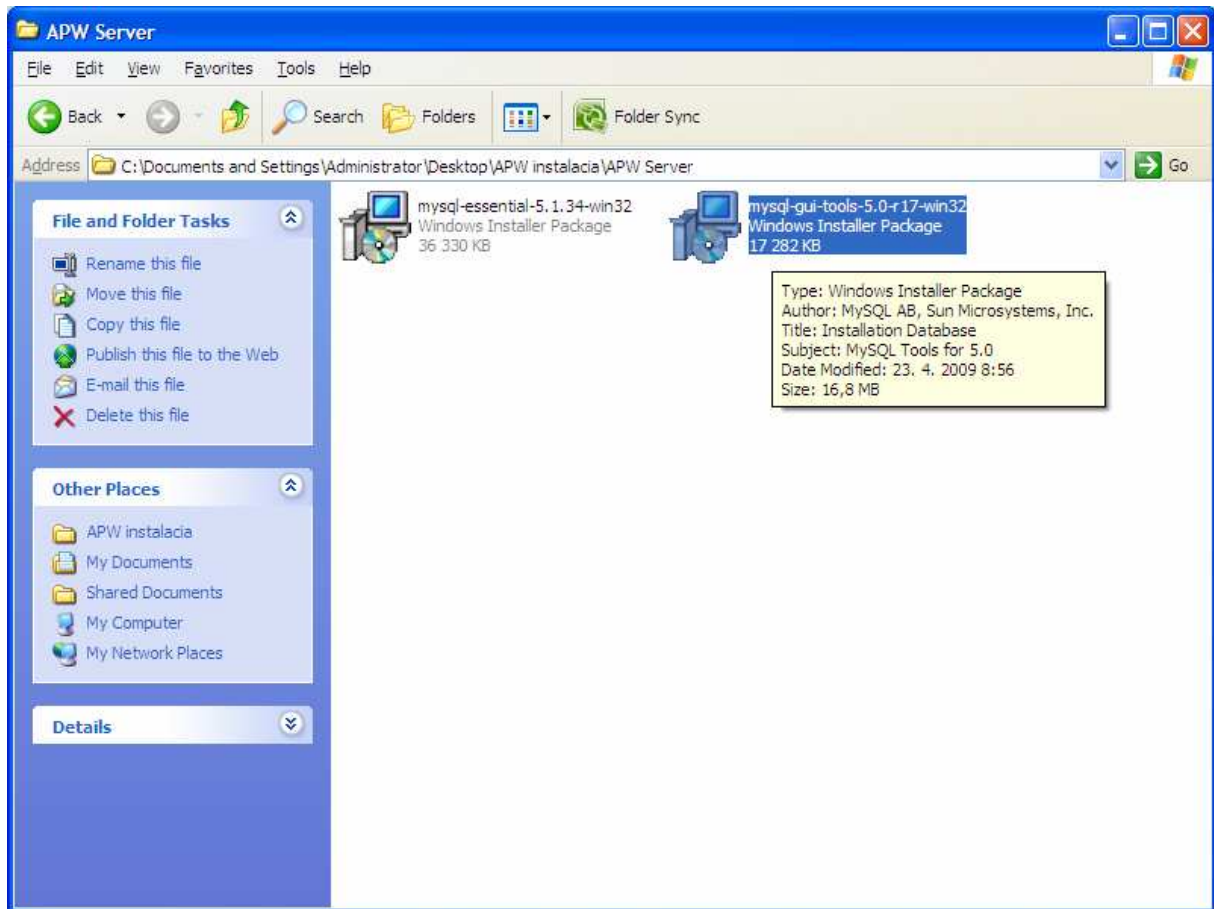


Nastavíme heslo a povolíme přístup z ostatných strojov v sieti. Heslo si treba veľmi dobre zapamätat.

A ďalej Next až po finish.

## IMPORT PRAZDNEJ DATABAZY

### Nainstalujeme MySQL GUI TOOLS



Postacia default nastavenia.

Spustime nainstalovany MySQL Query Browser:

MySQL Query Browser 1.2.17

MySQL Query Browser

Connect to MySQL Server Instance

Stored Connection:  ...


Server Host:  Port:


Username:

Password:

Default Schema:

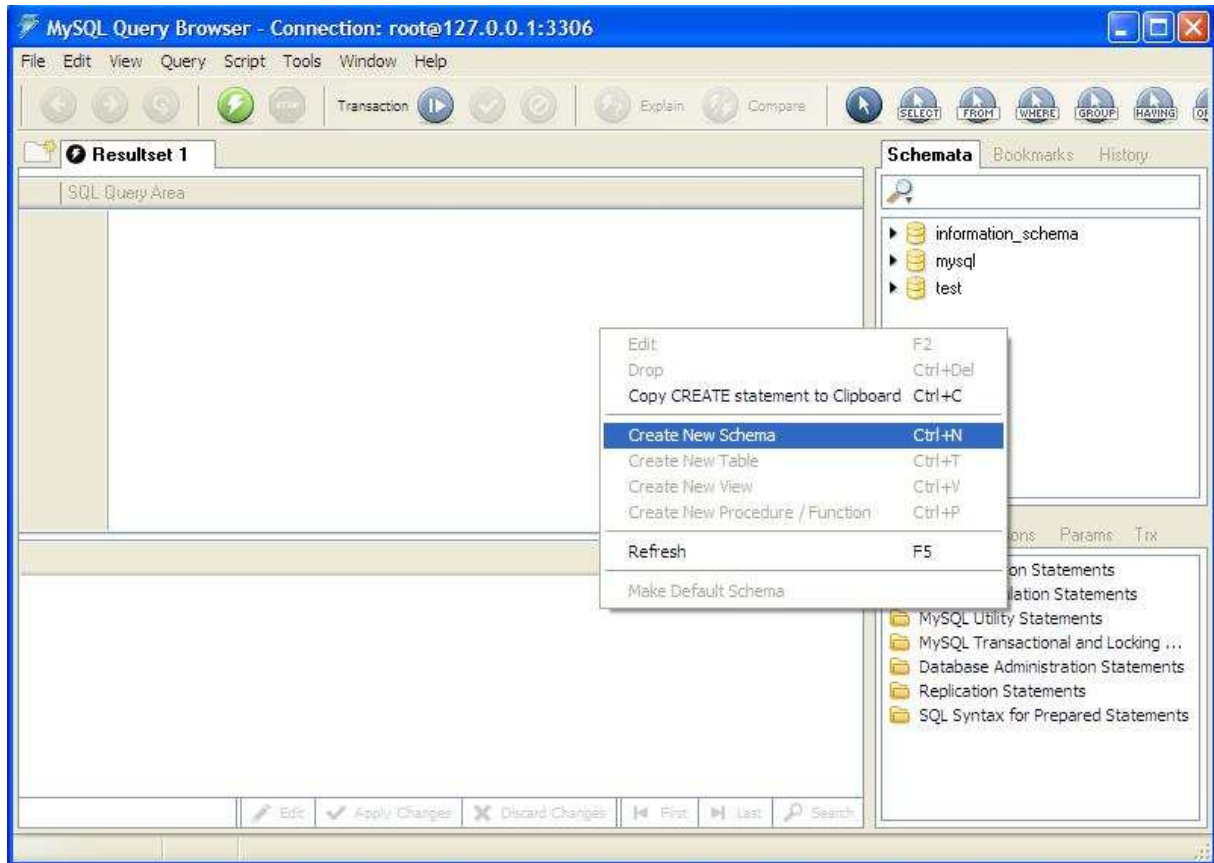
Connection Dialog - No Default Schema Specified

 You have not specified a default schema for this connection. Although it is possible to connect without specifying default schema you are highly encouraged to do so.

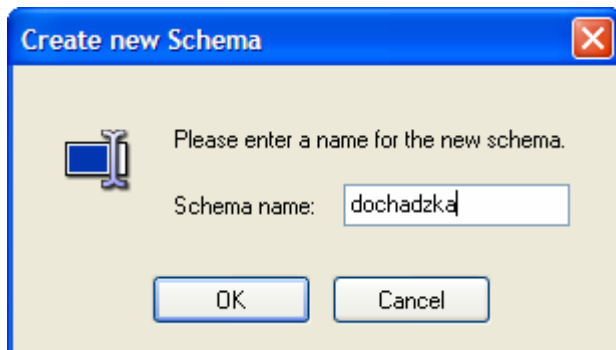


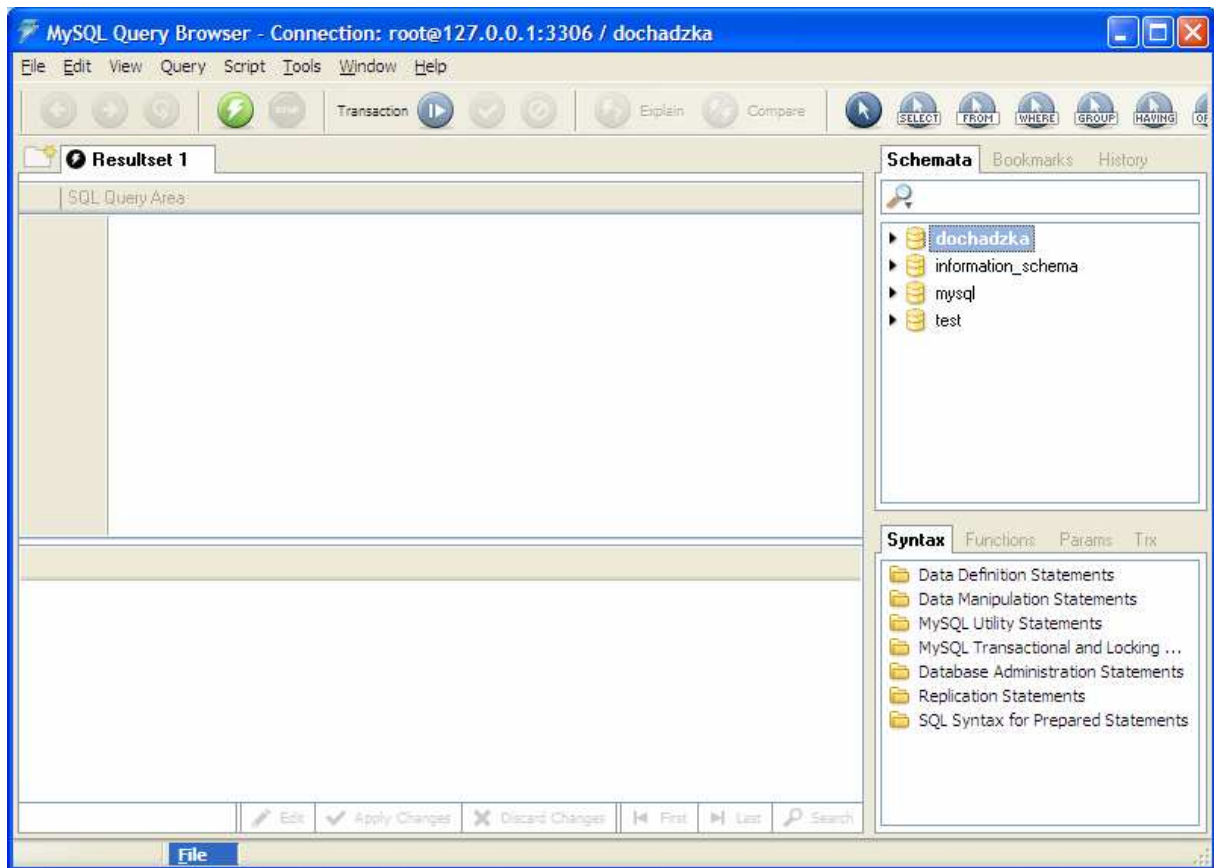
Do not show this message anymore.

Dame Ignore

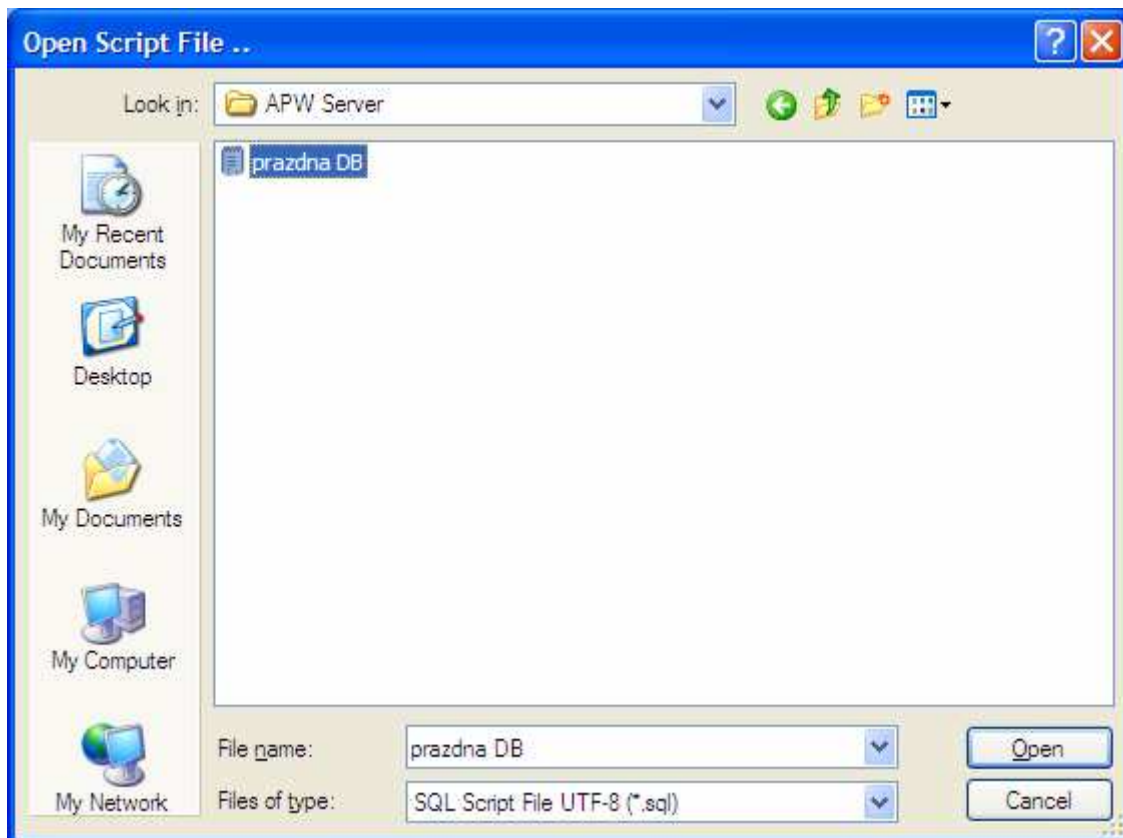


Vytvorime novu Databazu (Create New Schema)

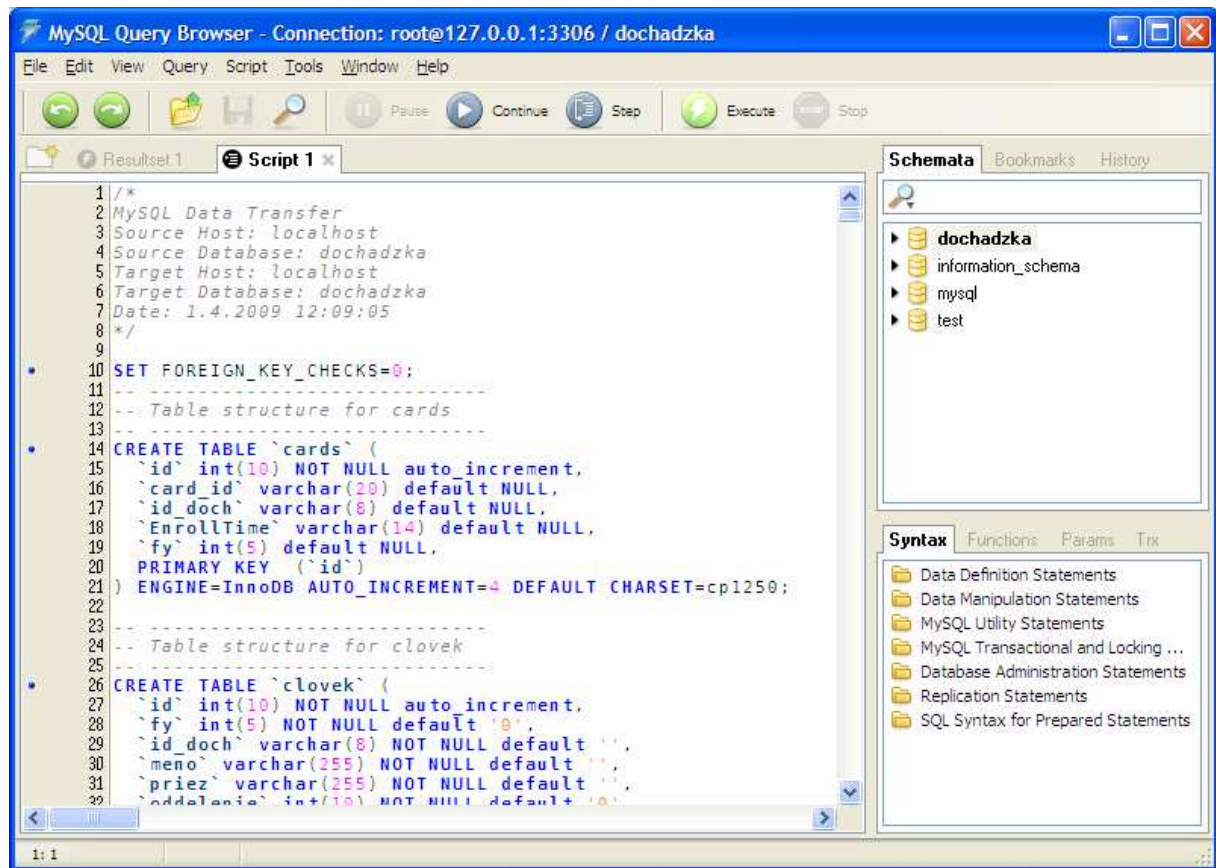




Oznacime ju dvojklikom a naimportujeme prazdnu databazu File → Open Script...







Vykoname Execute

Skoncime program, databaza je pripravena na pouzitie.